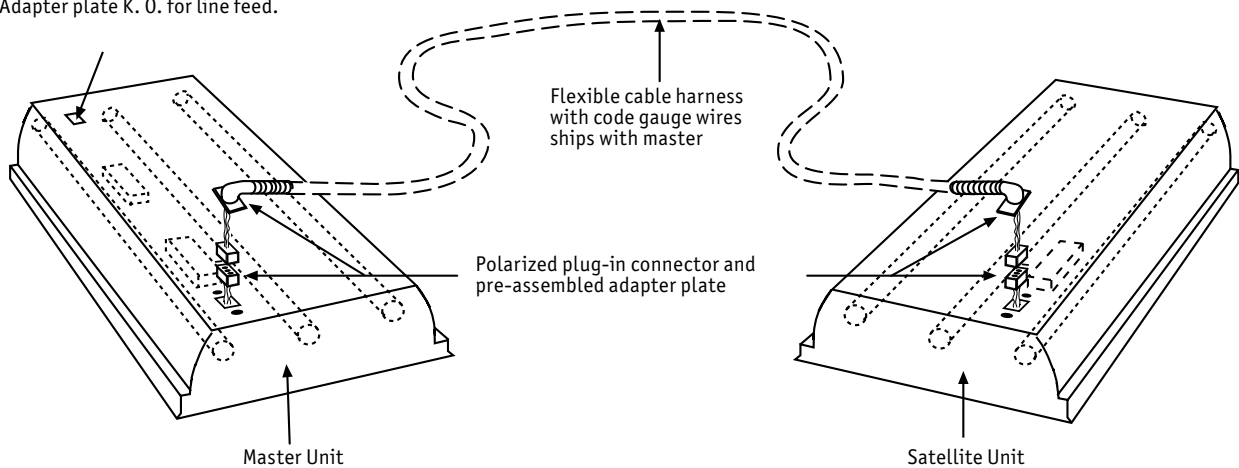


WIRING OPTIONS

Master/Satellite Wiring Harness

DETAIL FOR 2' x 4' 3-LAMP LUMINAIRES

Adapter plate K. O. for line feed.

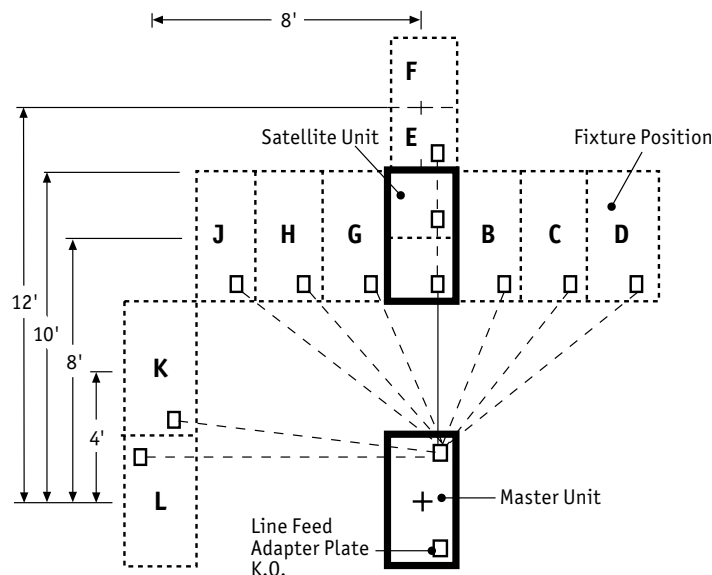


Ballast	Master	Satellite
E, EP	(2) 2-Lamp	(1) 2-Lamp
24E, 24EP	(1) 2-Lamp + (1) 4-Lamp	None

All wired for inboard-outboard

- Master/satellite units bear appropriate UL labels.
- Single units must be ordered to fill odd number layouts.
- Harness may be ordered with any Columbia Lighting 3-Lamp recessed luminaires.
- In master/satellite pairs requiring emergency inverters, UL requires that the inverter be located in the master and power lamps in the master.
- Many programmed start ballasts including all dimming and step dimming ballasts are not suitable for master/satellite applications due to lamp lead length restrictions. See ballast vendor technical data for more information.
- Available on most recessed fixtures. Not available on M46, WT, or AC series.

LAYOUT OPTIONS



Position	Minimum Length Harness Required
A	6'
B	7'
C	8'
D	9'
E	8'
F	10'
G	7'
H	7'
J	8'
K	9'
L	9'
Harness length must be specified on order.	

Caution: Some electronic ballasts can only be wired with harnesses less than 11' or are not suitable for remote mounting. Consult with ballast manufacturer before specifying.

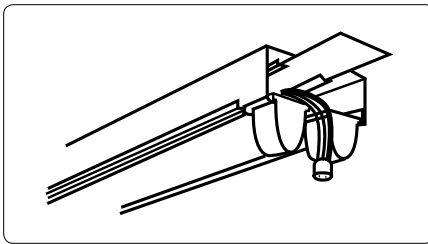
WIRING OPTIONS

Branch Circuits

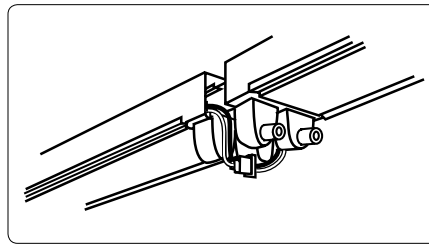
FEATURES

Plug-On Branch Circuit Wiring System features complete branch circuit wiring. You supply the feeder; Plug-On does the rest. The system will handle all popular voltage/phase combinations – 2 or 3 wire, 120V, 277V, or 240V, and 3-phase, 4 wire 120/208V or 277/480V-20 amp rating. It is UL listed and combines the following features:

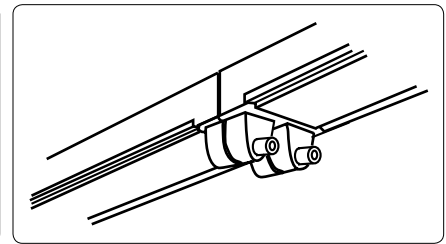
- Available on all continuous row surface mounted fixtures for up to 20 amp circuit runs. Supplied as single or multiple circuit with these fixtures: Surface (PT, AW), Strips (CS, CN, K, LB, KT, CHW, SS), Industrials (KL, CSR).
- Can be arranged in any circuit control for single circuit (BC1) or alternating 2 (BC2A, BC2B) or 3 circuit (BC3A, BC3B, BC3C) configurations.
- May be used with any conventional hanging method – chain, Zip-Tee, slide clamp, stem, or stud.
- Eliminates critical fit or lineup of adjacent fixtures.
- Complete, ready for connection as shipped – no separate parts to misplace. Connectors snap-lock for positive mechanical connection and are color coded for instant identification.
- Carton and channel marked for ballast circuit identity – aids installation, distribution, and maintenance.
- Free factory consulting on coordination of order is recommended to assure proper application.



Mount fixture in any economical, familiar manner.



Make electrical connection at same time as mounting next fixture. No need to come back. Power must be off when making connection.



Add lamps and move on to next fixture.

Catalog Number	-Suffix	Description
1 Circuit: 120V-277V (2 Wire)	-BC1	Ballasts connected to black/white wires
2 Circuit: 120V/240V or 120-277V (3 Wire)	-BC2A	Ballasts connected to black/white wires
	-BC2B	Ballasts connected to red/white wires
3 Circuit: 3 Phase 120V/208V or 277V/480V (4 Wire)	-BC3A	Ballasts connected to black/white wires
	-BC3B	Ballasts connected to red/white wires
	-BC3C	Ballasts connected to blue/white wires
3 Circuit with Ground (4 Wire)	-BC3AG	Ballasts connected to black/white wires
	-BC3BG	Ballasts connected to red/white wires
	-BC3CG	Ballasts connected to blue/white wires
4 Circuit with Ground (5 Wire)	-BC4AG	Ballasts connected to black/white wires
	-BC4BG	Ballasts connected to red/white wires
	-BC4CG	Ballasts connected to blue/white wires
	-BC4DG	Ballasts connected to yellow/white wires

Example: For 3-phase 277/480 volt supermarket lighting job, using CS8-232-EU fixtures, with fixtures to be connected alternately to A-B-C phases through the store, order: CS8-232-EU-BC3A – 1/3 of fixtures
 CS8-232-EU-BC3B – 1/3 of fixtures
 CS8-232-EU-BC3C – 1/3 of fixtures