

FEATURES

- Wet label housing troffer
- Gasketed to provide additional seal between door, lens, and housing
- Mitered corners standard on door frame
- Mechanical light trap
- All metal parts are white powder coat, painted after fabrication
- UL listed 1598 for wet location covered ceiling applications
- Rotary action cam latches. Smooth operating for secure shielding retention
- Corner hinging for easy insertion and removal of shielding frame
- Housing ends are secured by unique corner interlock and screws
- Metal to metal light leak protection on all four sides of shielding frame
- Rotary lock lampholders for positive lamp contact
- Heat sink embossments behind ballasts for cooler operation and longer life

PROJECT INFORMATION

Project Name _____

Type _____

Catalog No. _____

Date _____

FLANGED FEATURES

Four adjustable Uni-Lugs for quick easy installation. Optional plaster frames available for individual or row mounting.

HOUSING

Heavy gauge steel. Die formed for extra rigidity. Designed for installation in standard inverted tee grid ceilings.

BALLASTS

Thermally protected, automatic resetting, Class P, high power factor, sound rated A, unless otherwise specified.

FINISH

All metal parts are processed with a five phase phosphate bonding treatment. Grid units are pre-painted with high glass baked white enamel, 86% reflective. Flanged units are painted after fabrication with a polyester powder coat, reflectance of 90%.

SHIELDING

100% prismatic acrylic, extruded and roll-embossed, diagonally oriented female prisms, unless otherwise specified.

FLANGED UNIT INSTALLATION

Fixtures are installed from below the ceiling and have overlapping trim flanges. Adjustable Uni-Lugs secure the fixture to the ceiling structure. Plaster frames are available if required.

CERTIFICATION

All luminaires are built to UL 1598 standards and bear appropriate UL and cUL or CSA labels. Wet location labeling is standard.

ORDERING INFORMATION

EXAMPLE WT22-417G-FAA12-EU

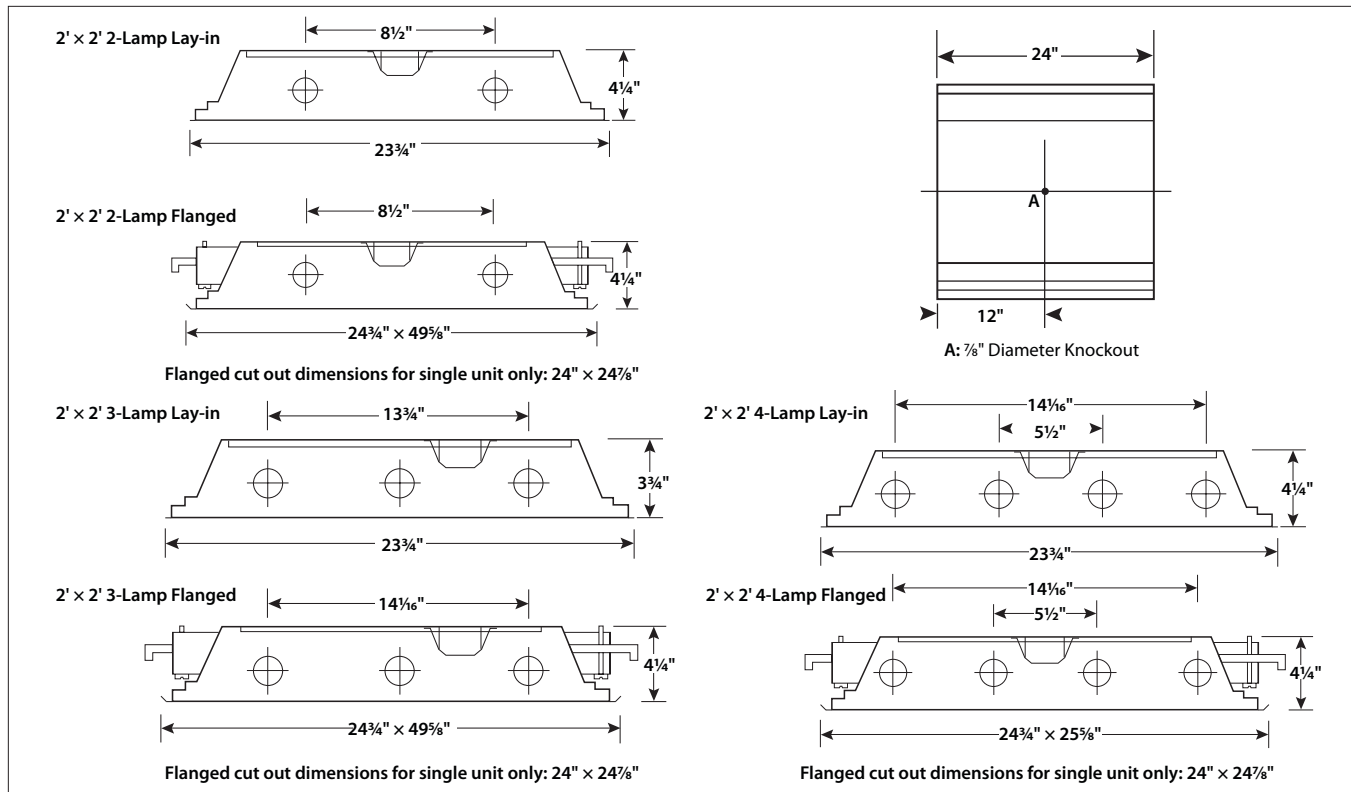
WT 22 -									
MODEL	NO. OF LAMPS	CEILING TYPE	SHIELDING	VOLTAGE	OPTIONS	SIZE	LAMP TYPE	DOOR STYLE	BALLAST
WT Wet Location Lensed Troffer	2 Two 3 Three 4 Four	G Inverted T-bar F Overlap Flange	A12 Pattern 12 Acrylic 0.100" Nominal (Standard) A12.125 Pattern 12 Acrylic 0.125" Nominal A19 Pattern 19 Acrylic 0.156" Male Prism DR12 High Impact Acrylic Pattern 12, .140" (Std.)	U 120V-277V 347 347V	F0730 T8, 70CRI, 3000K Lamps, Furn/Inst. F0735 T8, 70CRI, 3500K Lamps, Furn/Inst. F0741 T8, 70CRI, 4100K Lamps, Furn/Inst. SLL Spring Loaded Latches GMF Slow Blow Fuse GLR Fast Blow Fuse C388 3/8" Flex with 3 No. 18 Wires C384 3/8" Flex with 3 No. 14 Wires C488 3/8" Flex with 4 No. 18 Wires C424 1/2" Flex with 4 No. 14 Wires NYCU NYC Compliant, Union Labeled	22 2' x 2'	14 2', T5: 14 Watt 17 2', T8: 17 Watt 24 2', T5HO: 24 Watt 40TT Twin Tube Compact, 2G11 Base: 40 Watt 31U1 U-Bent, 1 1/2" Leg Spacing T8: 31 Watt 32U6 U-Bent, 6" Leg Spacing T8: 32 Watt	FA White Flush Aluminum RA White Regressed Aluminum	E Electronic T8, Instant Start 3E 3-lamp Electronic Instant Start (T8) 4E 4-Lamp Electronic T8, Instant Start EP Electronic T5 or T8, Programmed Start 3EP 3-lamp Electronic Programmed Start (T8, T5HO) Others available. 4EP 4-Lamp Electronic T5HO (N/A 347V) or T8, Programmed Start EPTT Electronic Programmed Start (40TT)

For a complete set of options, see options and accessories section.

For a specific ballast vendor, show as option.

PHOTOMETRIC DATA – CONTACT FACTORY

DIMENSIONAL DATA



NOTE: All dimensions are in inches; dimensions and specifications are subject to change without notice. Please consult factory or check sample for verification.