

**FEATURES**

- Wet label housing troffer
- Gasketed to provide additional seal between door, lens, and housing
- Mitered corners standard on door frame
- Mechanical light trap
- All metal parts are white powder coat, painted after fabrication
- UL listed 1598 for wet location covered ceiling applications
- Rotary action cam latches. Smooth operating for secure shielding retention
- Corner hinging for easy insertion and removal of shielding frame
- Housing ends are secured by unique corner interlock and screws
- Metal to metal light leak protection on all four sides of shielding frame
- Rotary lock lampholders for positive lamp contact
- Heat sink embossments behind ballasts for cooler operation and longer life

**PROJECT INFORMATION**

Project Name \_\_\_\_\_

Type \_\_\_\_\_

Catalog No. \_\_\_\_\_

Date \_\_\_\_\_

**FLANGED FEATURES**

Four adjustable Uni-Lugs for quick easy installation. Optional plaster frames available for individual or row mounting. Fixture end flanges are removable for row mounting. Joiner channels are included.

**HOUSING**

Heavy gauge steel. Die formed for extra rigidity. Designed for installation in standard inverted tee grid ceilings.

**BALLASTS**

Energy efficient, thermally protected, automatic resetting, Class P, high power factor, sound rated A, unless otherwise specified. CEE NEMA Premium compliant.

**ELECTRICAL**

Standard class "P," thermally protected, autoresetting HPF ballast, sound rated A. CEE NEMA Premium compliant. All ballast leads extend a minimum of 6" through access location. NEC/CEC-compliant ballast disconnect is standard.

**FINISH**

All metal parts are processed with a five phase phosphate bonding treatment. Grid units are pre-painted with high glass baked white enamel, 86% reflective. Flanged units are painted after fabrication with a polyester powder coat, reflectance of 90%.

**SHIELDING**

100% acrylic prismatic, extruded and roll-embossed, diagonally oriented female prisms, unless otherwise specified.

**FLANGED UNIT INSTALLATION**

Fixtures are installed from below the ceiling and have overlapping trim flanges. Adjustable Uni-Lugs secure the fixture to the ceiling structure. Plaster frames are available if required.

**CERTIFICATION**

All luminaires are built to UL 1598 standards and bear appropriate UL and cUL or CSA labels. Wet location labeling is standard.

**ORDERING INFORMATION**

**EXAMPLE WT14-332G-FAA12-EU-C488-GLR**

WT	14	-	32	-	-	-	-
<b>MODEL</b>	<b>NO. OF LAMPS</b>	<b>CEILING TYPE</b>	<b>SHIELDING</b>	<b>VOLTAGE</b>	<b>OPTIONS</b>		
WT Wet Location Lensed Troffer	1 One 3 Three	G Inverted T-bar F Overlap Flange	A12 Pattern 12 Acrylic 0.100" Nominal (Standard) A12.125 Pattern 12 Acrylic 0.125" Nominal A19 Pattern 19 Acrylic 0.156" Male Prism DR12 High Impact Acrylic Pattern 12, .140" (Std.)	U 120V-277V 347 347V	F0730 T8, 70CRI, 3000K Lamps, Furn/Inst. F0735 T8, 70CRI, 3500K Lamps, Furn/Inst. F0741 T8, 70CRI, 4100K Lamps, Furn/Inst. SLL Spring Loaded Latches GMF Slow Blow Fuse GLR Fast Blow Fuse C388 3/8" Flex with 3 No. 18 Wires C384 3/8" Flex with 3 No. 14 Wires C488 3/8" Flex with 4 No. 18 Wires C424 1/2" Flex with 4 No. 14 Wires PAF Paint After Fabrication NYC NYC Compliant NYCU NYC Compliant, Union Label		
<b>SIZE</b>	<b>LAMP TYPE</b>	<b>DOOR STYLE</b>	<b>BALLAST</b>				
14 1' x 4'	32 4', T8: 32, 30, 28 or 25 Watt	FA White Flush Aluminum RA White Regressed Aluminum	E Electronic T8, Instant Start 3E 3-Lamp Electronic T8, Instant Start EP Electronic T8, Programmed Start 3EP 3-Lamp Electronic T8, Programmed Start				
			For complete list of lenses and louvers, see options and accessories.				
			For specific ballast vendor, show as option.				
							For a complete set of options, see options and accessories section.

### PHOTOMETRIC DATA

Test 13752 Test Date 12/14/04

#### LUMINAIRE DATA

Luminaire	WT14-332G-FSA12-E-PAF WT Lensed Troffer 1' x 4' 3-Lamp with A12 Prismatic Acrylic Lens
Ballast	REL-3P32-SC
Ballast Factor	0.88
Lamp	F32T8
Lumens per Lamp	2900
Total Input Watts	83
Mounting	Recessed
Reflectance	PCW 91.5
Shielding Angle	0° = 0 90° = 0
Spacing Criterion	0° = 1.24 90° = 1.25
Luminous Opening in Feet	Length: 3.81 Width: 0.81 Height: 0.00

#### ZONAL LUMEN SUMMARY

Zone	Lumens	% Lamp	% Fixt.
0-30	2111	24.3	33.1
0-40	3393	39.0	53.2
0-60	5429	62.4	85.1
0-90	6380	73.3	100.0
0-180	6380	73.3	100.0

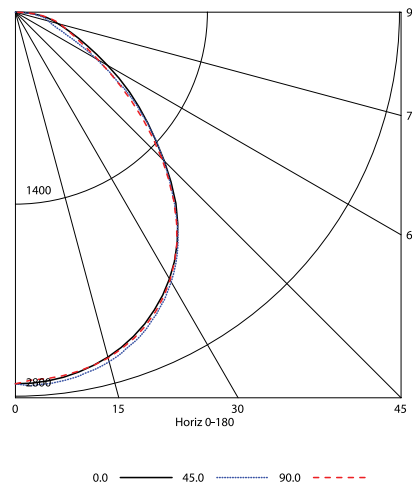
#### ENERGY DATA

Total Luminaire Efficiency	73.3%
Luminaire Efficacy Rating (LER)	FL - 68
ANSI/IESNA RP-1-2004 Compliance	Noncompliant
Comparative Yearly Lighting Energy Cost per 1000 Lumens	\$3.53 based on 3000 hrs. and \$0.08 per KWH

#### COEFFICIENTS OF UTILIZATION (%)

RCR	RC		80				70				50				0
	RW	70	50	30	10	70	50	30	10	50	30	10	0		
1	80	77	74	72	78	76	73	70	72	70	68	63	63		
2	74	68	64	60	72	67	63	59	64	61	58	54	54		
3	68	61	55	51	66	60	54	50	57	53	49	46	46		
4	63	54	48	44	61	53	48	43	52	47	43	40	40		
5	58	49	43	38	56	48	42	38	47	41	38	35	35		
6	54	44	38	34	52	44	38	34	42	37	33	31	31		
7	50	40	34	30	49	40	34	30	39	34	30	28	28		
8	47	37	31	27	45	37	31	27	36	30	27	25	25		
9	44	34	28	24	43	34	28	24	33	28	24	23	23		
10	41	32	26	22	40	31	26	22	31	26	22	21	21		

#### INDOOR CANDELA PLOT



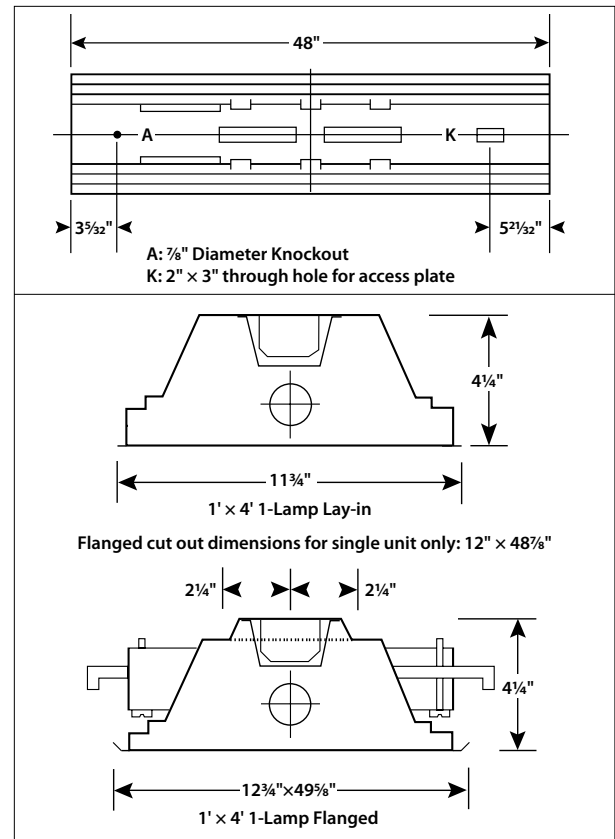
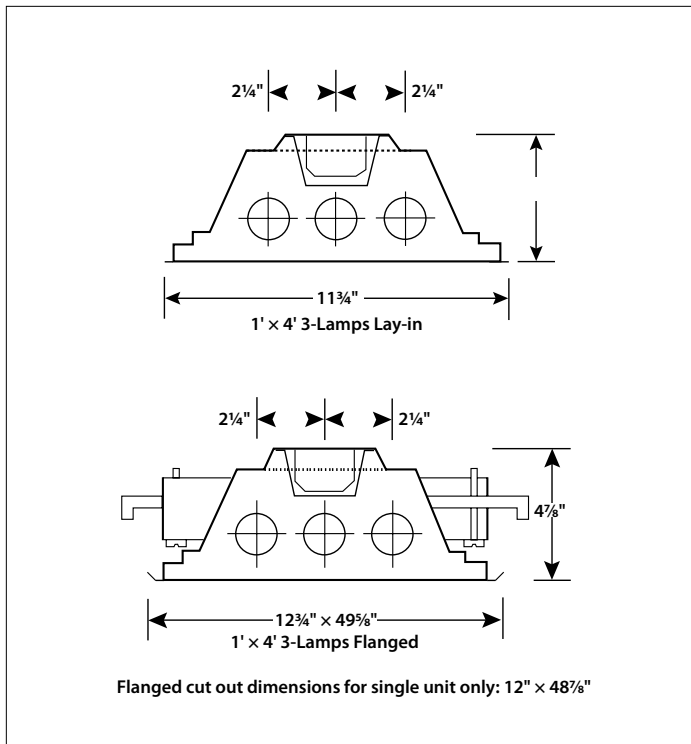
#### AVG. LUMINANCE (Candela/Sq. M.)

Average Luminance Angle	0.0	22.5	45.0	67.5	90.0
0	9449	9449	9449	9449	9449
30	9042	9110	9146	9110	9078
40	8282	8268	8209	8159	8177
45	7572	7616	7542	7433	7443
50	6837	6870	6832	6571	6582
55	6166	5941	5862	5582	5667
60	5413	4939	4723	4688	4869
65	4762	4176	3747	4168	4374
70	4375	3814	3161	4059	4232
75	4299	3841	3342	4191	4568
80	4740	4057	4017	4620	5062
85	5043	4642	4322	5523	5443

RCR = Room Cavity Ratio

RC = Effective Ceiling Cavity Reflectance RW = Wall Reflectance

#### DIMENSIONAL DATA



**NOTE:** All dimensions are in inches; dimensions and specifications are subject to change without notice. Please consult factory or check sample for verification.