

FEATURES

- Clear acrylic prismatic diffuser. Hinges from either side. Flat bottom and vertical sides
- Linear side prisms control visual brightness and direct light onto adjacent ceiling area
- Injection molded decorative glow ends on diffuser baskets.
- Heavy gauge steel housing, die embossed for maximum rigidity
- Heat sink embossments and levelling projections allow direct mounting of HPF fixtures on combustible low density cellulose fiberboard ceilings
- Also available with 3 lamps, see WCW3

PROJECT INFORMATION

Project Name _____

Type _____

Catalog No. _____

Date _____

FINISH

All parts pre-painted with high gloss baked white enamel, minimum reflectance 86%, applied over iron phosphate pre-treatment for maximum adhesion and rust resistance.

SHIELDING

100% clear prismatic acrylic. 50% DR acrylic lens available as an option.

BALLASTS

Energy efficient, thermally protected, automatic resetting, Class P, high power factor, sound rated A, unless otherwise specified. CEE NEMA Premium compliant.

CERTIFICATION

All luminaires are built to UL 1598 standards and bear appropriate UL and cUL or CSA labels. Damp location labeling is standard. Emergency-equipped fixtures labeled UL 924.

ELECTRICAL

Standard class "P", thermally protected, auto-resetting HPF ballast, sound rated A. CEE NEMA Premium compliant. All ballast leads extend a minimum of 6" through access location. NEC/CEC-compliant ballast disconnect is standard.

ORDERING INFORMATION

EXAMPLE WCW4-432-4EU

WCW							
MODEL	SIZE	LAMP TYPE		BALLAST	VOLTAGE	OPTIONS	
WCW 15 3/8" Wide Specification Grade Wraparound	2 2' 4 4' 8 8'	14 2', T5: 14 Watt 17 2', T8: 17 Watt 24 2', T5HO: 24 Watt 28 4', T5: 28 Watt 32 4', T8: 32, 30, 28 or 25 Watt 54 4', T5HO: 54 or 51 Watt	NO. OF LAMPS 2 Two 4 Four	LENS Blank Clear Prismatic Acrylic DR 50% DR content, Clear Prismatic Acrylic	E Electronic T8, Instant Start 4E 4-Lamp Electronic T8, Instant Start EP Electronic T5, T5HO, or T8, Programmed Start 4EP 4-Lamp Electronic T5 or T8, Programmed Start	U 120V-277V 347 347V	GLR Fast Blow Fuse EL Emergency Battery Pack PAF Paint After Fabrication NYC NYC Compliant NYCU NYC Compliant, Union Label
						ACCESSORIES (ORDER SEPARATELY) ITB4 T-Bar Hanger S18 18" Stem, Canopy SS18 18" Swivel Stem - 45° Swivel	

PHOTOMETRIC DATA

LUMINAIRE DATA

Luminaire	WCW4-432 15" x 48" White Painted Interior with Wraparound Acrylic Prisms Lens
Ballast	B432I120RH
Ballast Factor	0.88
Lamp	FO32/41K BAL. FAC.: .88
Lumens per Lamp	2900
Watts	105
Shielding Angle	N/A
Spacing Criterion	0° = 1.26 90° = 1.34
Luminous Opening in Feet	Length: 4.00 Width: 1.27 Height: 0.08

ZONAL LUMEN SUMMARY

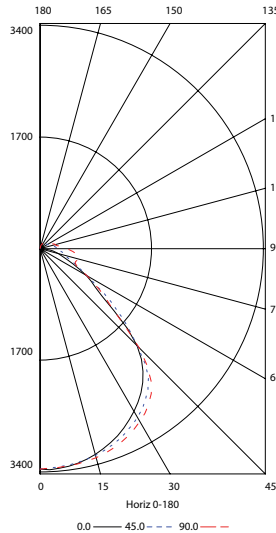
Zone	Lumens	% Lamp	% Fixt.
0-30	2661	22.9	28.9
0-40	4401	37.9	47.8
0-60	7047	60.8	76.6
0-90	8488	73.2	92.2
90-120	491	4.2	5.3
90-130	575	5.0	6.2
90-150	682	5.9	7.4
90-180	717	6.2	7.8
0-180	9206	79.4	100.0

Test L11151 Test Date 1/8/03

ENERGY DATA

Total Luminaire Efficiency	79.4%
Luminaire Efficacy Rating (LER)	77
IESNA RP-1-1993 Compliance	Non-Compliant
Comparative Yearly Lighting Energy Cost per 1000 Lumens	\$3.12 based on 3000 hrs. and \$0.08 per KWH

INDOOR CANDELA PLOT



AVG. LUMINANCE (Candela/Sq. M.)

	0.0	22.5	45.0	67.5	90.0
0	7102	7102	7102	7102	7102
30	6910	6913	7007	7107	7170
40	6624	6636	6754	6807	6902
45	6128	6093	5947	5789	6013
50	4730	5151	5037	4502	4507
55	3689	4259	4042	3822	3782
60	3318	3410	3193	3405	3175
65	2663	2844	2774	3176	2734
70	2237	2451	2566	3305	3037
75	2171	2352	2633	3680	4004
80	2159	2664	3278	4726	5259
85	1919	2469	4278	6436	7110

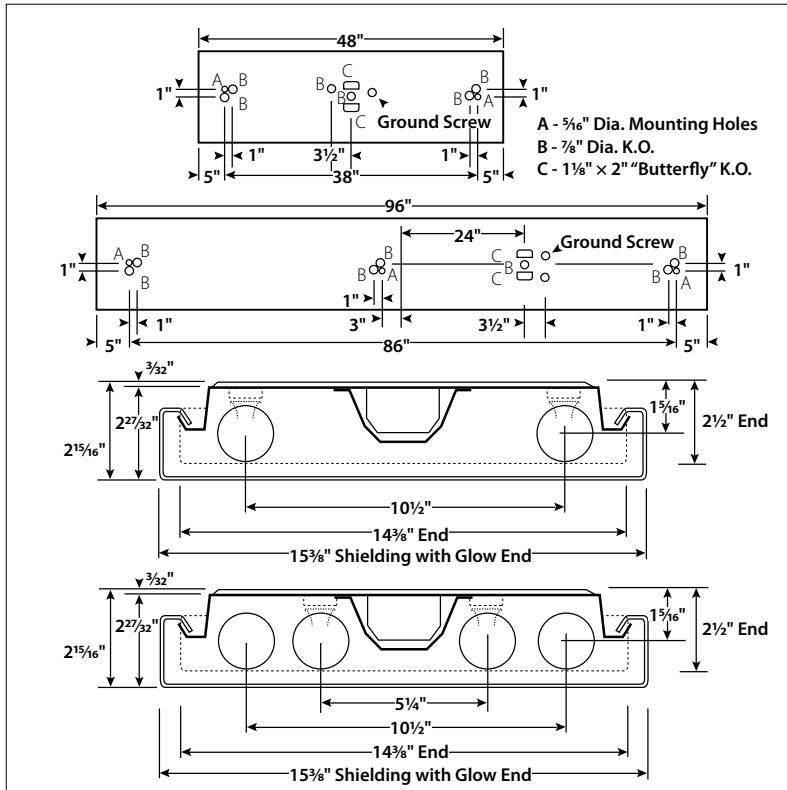
COEFFICIENTS OF UTILIZATION (%)

RCR	RC	80				70				50				0
		RW	70	50	30	10	70	50	30	10	50	30	10	0
1	85	81	78	75	82	79	76	73	74	72	70	61		
2	78	72	66	62	75	70	65	61	66	62	59	52		
3	71	64	57	53	69	62	56	52	59	54	50	45		
4	66	57	50	45	64	55	49	45	53	47	43	39		
5	61	51	44	39	59	50	44	39	48	42	38	34		
6	56	46	40	35	54	45	39	34	43	38	34	30		
7	52	42	35	31	51	41	35	31	39	34	30	27		
8	49	39	32	28	47	38	32	27	36	31	27	24		
9	46	35	29	25	44	35	29	25	33	28	24	22		
10	43	33	27	23	42	32	26	22	31	26	22	20		

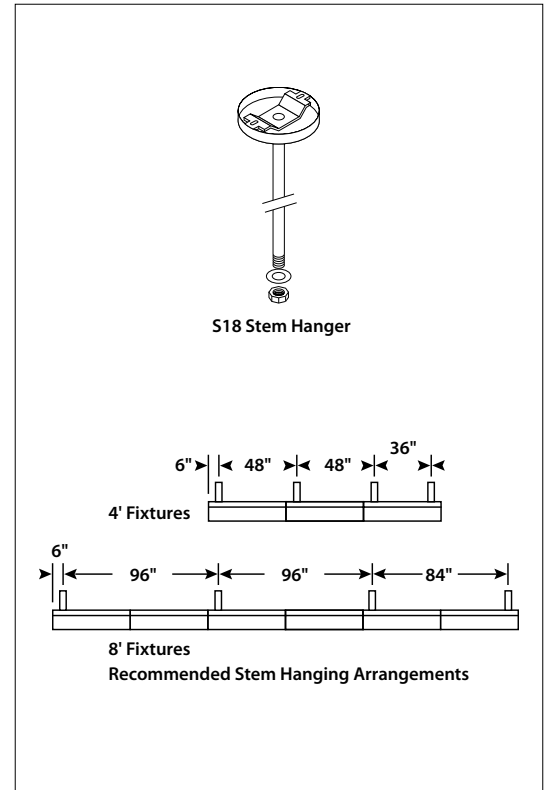
RCR = Room Cavity Ratio

RC = Effective Ceiling Reflectance RW = Wall Reflectance

DIMENSIONAL DATA



STEM MOUNTING



NOTE: All dimensions are in inches; dimensions and specifications are subject to change without notice. Please consult factory or check sample for verification.