

**FEATURES**

- Matches the WC Series in appearance
- Clear acrylic prismatic diffuser, flat bottom with vertical sides and injection molded ends sonically welded to the prismatic extrusion (shipped separately)
- Injection molded white plastic decorative ends are removable for continuous row mounting
- Heavy gauge steel housing die embossed for maximum rigidity. Sturdy metal end pieces provide overall strength to the fixture

**PROJECT INFORMATION**

Project Name \_\_\_\_\_

Type \_\_\_\_\_

Catalog No. \_\_\_\_\_

Date \_\_\_\_\_

**CONSTRUCTION**

Fixture shipped ready to assemble. Install sockets, and attach end caps in field. Lens assembly shipped separately.

**FINISH**

White painted parts are treated with a five stage phosphate bonding process and finished after fabrication with a minimum 90% reflective gloss baked enamel.

**ELECTRICAL**

Standard class "P", thermally protected, auto-resetting HPF ballast, sound rated A. CEE NEMA Premium compliant. All ballast leads extend a minimum of 6" through access location. NEC/CEC-compliant ballast disconnect is standard.

**SHIELDING**

100% clear prismatic acrylic.

**BALLASTS**

Energy efficient, thermally protected, automatic resetting, Class P, high power factor, sound rated A, unless otherwise specified. CEE NEMA Premium compliant.

**CERTIFICATION**

All luminaires are built to UL 1598 standards and bear appropriate UL and cUL or CSA labels. Damp location labeling is standard. Emergency-equipped fixtures labeled UL 924.

**ORDERING INFORMATION**

**EXAMPLE PT4-132-EU**

PT		-		-		-		
MODEL	LENGTH	NO. OF LAMPS	LAMP TYPE	BALLAST	VOLTAGE	OPTIONS		
PT Premium Corridor Wraparound	2 2' 4 4' 8 8'	1 One 2 Two	14 2', T5: 14 Watt 17 2', T8: 17 Watt 24 2', T5HO: 24 Watt 28 4', T5: 28 Watt 32 4', T8: 32, 30, 28 or 25 Watt 54 4', T5HO: 54 or 51 Watt	E Electronic T8, Instant Start 4E 4-Lamp Electronic T8, Instant Start EP Electronic T5 or T8, Programmed Start 4EP 4-Lamp Electronic T5HO (N/A 347V) or T8, Programmed Start	U 120V-277V 347 347V	GLR Fast Blow Fuse EL Emergency Battery Pack PAF Paint After Fabrication		
							<b>ACCESSORIES (ORDER SEPARATELY)</b>	
							ITB4 T-Bar Hanger S18 18" Stem, Canopy SS18 18" Swivel Stem-45° Swivel	

For a specific ballast vendor show as option.

### PHOTOMETRIC DATA

#### LUMINAIRE DATA

Luminaire	PT4-132-E PT Wraparound 7" x 48" 1-Lamp with wraparound acrylic prism lens
Ballast	B2321120
Ballast Factor	0.96
Lamp	FO32
Lumens per Lamp	2900
Watts	30
Shielding Angle	N/A
Spacing Criterion	0° = 1.27 90° = 1.53
Luminous Opening in Feet	Length: 4.00 Width: 0.56 Height: 0.25

#### AVG. LUMINANCE (Candela/Sq. M.)

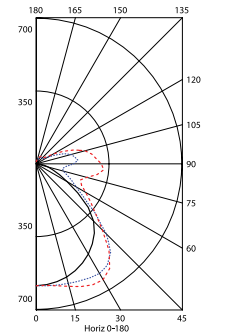
	0.0	22.5	45.0	67.5	90.0
0	2816	2816	2816	2816	2816
30	2683	2686	2793	2823	2837
40	2593	2658	2679	2521	2483
45	2494	2522	2384	2143	2110
50	2268	2221	1952	1810	1820
55	1869	1756	1538	1590	1632
60	1492	1336	1314	1440	1485
65	1233	1091	1207	1351	1394
70	1019	984	1116	1310	1426
75	903	922	1078	1505	1755
80	797	868	1165	1999	2327
85	643	809	1553	2643	2945

#### COEFFICIENTS OF UTILIZATION (%)

RC	80					70					50					0				
	RW	70	50	30	10	70	50	30	10	50	30	10	0	30	10	0	30	10	0	
1	89	84	80	76	84	80	76	73	70	67	64	54	55	55	44	44	46	37	32	
2	81	73	67	61	76	70	64	59	64	59	55	44	45	39	34	28	28	23	19	
3	73	64	57	51	70	61	55	49	56	51	46	37	32	28	23	17	17	14	11	
4	67	57	49	43	64	54	47	42	50	44	39	32	28	23	19	14	11	8	6	
5	62	51	43	37	59	49	41	36	45	39	34	28	24	20	16	12	9	7	5	
6	57	46	38	32	54	44	37	31	40	34	30	24	20	16	12	9	7	5	4	
7	53	41	34	28	50	40	33	28	37	31	26	21	17	13	10	7	5	4	3	
8	49	37	30	25	47	36	29	25	33	28	23	19	15	11	8	6	4	3	2	
9	46	34	27	23	44	33	26	22	31	25	21	17	13	10	7	5	4	3	2	
10	43	32	25	20	41	30	24	20	28	23	19	15	11	8	6	4	3	2	1	

Test 10324 Test Date 1/8/03

#### INDOOR CANDELA PLOT



#### ZONAL LUMEN SUMMARY

Zone	Lumens	Lamp	Fixt.
0-30	499	17.2	19.8
0-40	853	29.4	33.8
0-60	1462	50.4	57.9
0-90	1989	68.6	78.7
90-120	429	14.8	17.0
90-130	469	16.2	18.6
90-150	518	17.9	20.5
90-180	537	18.5	21.3
0-180	2526	87.1	100.0

RCR = Room Cavity Ratio

RC = Effective Ceiling Cavity Reflectance RW = Wall Reflectance

#### ENERGY DATA

Total Luminaire Efficiency	87.1%
Luminaire Efficacy Rating (LER)	81
ANSI/IESNA RP-1-2004 Compliance	Noncompliant
Comparative Yearly Lighting Energy Cost per 1000 Lumens	\$2.96 based on 3000 hrs. and \$0.08 per KWH

#### LUMINAIRE DATA

Luminaire	PT4-232-E PT Wraparound 7" x 48" 2-Lamp with wraparound acrylic prism lens
Ballast	B2321120RH
Ballast Factor	0.88
Lamp	FO32/741
Lumens per Lamp	2900
Watts	55
Shielding Angle	N/A
Spacing Criterion	0° = 1.26 90° = 1.44
Luminous Opening in Feet	Length: 4.00 Width: 0.56 Height: 0.25

#### AVG. LUMINANCE (Candela/Sq. M.)

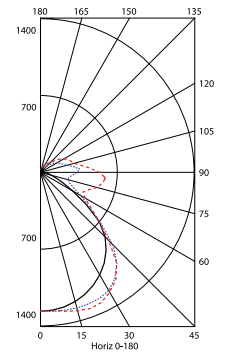
	0.0	22.5	45.0	67.5	90.0
0	6084	6084	6084	6084	6084
30	5779	5642	5711	5589	5559
40	5543	5395	5213	5000	4933
45	5328	5000	4643	4239	4120
50	4863	4301	3736	3438	3382
55	3884	3291	2961	2890	2870
60	2914	2506	2498	2518	2542
65	2256	2091	2156	2332	2480
70	1787	1855	1985	2473	2941
75	1551	1763	2060	3129	3712
80	1512	1796	2384	3918	4490
85	1447	1801	3170	4862	5367

#### COEFFICIENTS OF UTILIZATION (%)

RC	80					70					50					0				
	RW	70	50	30	10	70	50	30	10	50	30	10	0	30	10	0	30	10	0	
1	87	83	78	75	83	79	75	72	72	69	67	54	55	55	45	45	46	38	32	
2	79	72	66	61	75	69	63	59	63	59	55	45	45	39	34	28	28	23	19	
3	72	63	56	51	69	61	54	49	56	50	46	38	32	28	23	17	17	14	11	
4	66	56	49	43	63	54	47	42	50	44	39	32	28	23	19	14	11	8	6	
5	61	50	43	37	58	48	41	36	45	39	34	28	24	20	16	12	9	7	5	
6	56	45	38	32	54	44	37	32	40	34	30	25	20	16	12	9	7	5	4	
7	52	41	34	29	50	40	33	28	37	31	27	22	17	13	10	7	5	4	3	
8	49	37	30	25	46	36	29	25	34	28	24	20	16	12	9	7	5	4	3	
9	45	34	27	23	43	33	27	22	31	25	21	17	13	10	7	5	4	3	2	
10	43	32	25	21	41	31	24	20	29	23	19	15	11	8	6	4	3	2	1	

Test 11013 Test Date 1/8/03

#### INDOOR CANDELA PLOT



#### ZONAL LUMEN SUMMARY

Zone	Lumens	Lamp	Fixt.
0-30	1055	18.2	21.4
0-40	1769	30.5	35.8
0-60	2950	50.9	59.7
0-90	3947	68.1	79.9
90-120	709	12.2	14.4
90-130	830	14.3	16.8
90-150	950	16.4	19.2
90-180	994	17.1	20.1
0-180	4942	85.2	100.0

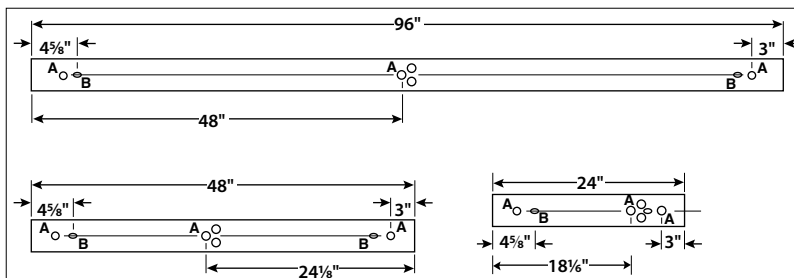
RCR = Room Cavity Ratio

RC = Effective Ceiling Cavity Reflectance RW = Wall Reflectance

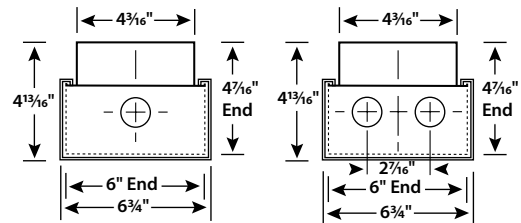
#### ENERGY DATA

Total Luminaire Efficiency	85.2%
Luminaire Efficacy Rating (LER)	79
ANSI/IESNA RP-1-2004 Compliance	Noncompliant
Comparative Yearly Lighting Energy Cost per 1000 Lumens	\$3.04 based on 3000 hrs. and \$0.08 per KWH

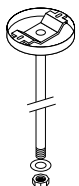
### DIMENSIONAL DATA



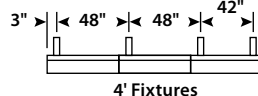
A - 7/8" Diameter Knockout B - 5/16" x 1/2" hole



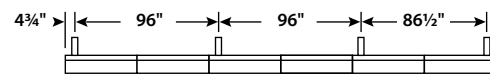
#### Recommended Stem Hanging Arrangements



S18 Stem Hanger



4' Fixtures



8' Fixtures

**NOTE:** All dimensions are in inches; dimensions and specifications are subject to change without notice. Please consult factory or check sample for verification.