

**FEATURES**

- Available 2', 3', 4' or 8'
- Heavy die formed steel channel
- Rotary lock lampholders for positive lamp contact
- Channel ends double as joiners
- Individual or row mounting. Surface or suspended
- Ballast covers on 4' and 8' units are secured with ¼-turn fasteners

**PROJECT INFORMATION**

Project Name \_\_\_\_\_

Type \_\_\_\_\_

Catalog No. \_\_\_\_\_

Date \_\_\_\_\_

**CONSTRUCTION**

Steel housing die formed with heat sink embossments for cooler running ballasts. Socket saddles are factory installed.

**FINISH**

White painted parts are treated with a five stage phosphate bonding process and finished with a high reflectance baked enamel.

**BALLASTS**

Energy efficient, thermally protected, automatic resetting, Class P, high power factor, sound rated A, unless otherwise specified. CEE NEMA Premium compliant.

**ELECTRICAL**

Standard class "P," thermally protected, auto-resetting HPF ballast, sound rated A. CEE NEMA Premium compliant. All ballast leads extend a minimum of 6" through access location. NEC/CEC-compliant ballast disconnect is standard.

**CERTIFICATION**

All luminaires are built to UL 1598 standards and bear appropriate UL and CUL or CSA labels. Damp location labeling is standard. Emergency-equipped fixtures labeled UL 924.

**ORDERING INFORMATION**

**EXAMPLE CS4-332-3EU-GLR**

MODEL	SIZE	NO. OF LAMPS IN CROSS SECTION	LAMP TYPE	BALLAST	VOLTAGE	OPTIONS
CS Straight-Sided Utility Channel	2 2' 3 3' 4 4' 8 8' (Tandem length)	3 Three	32 4', T8: 32 Watt 25 3', T8: 25 Watt 17 2', T8: 17 Watt	E Electronic T8, Instant Start  3E 3-Lamp Electronic T8, Instant Start  24E (1) 2-Lamp and (1) 4-Lamp Electronic T8, Instant Start  For a specific ballast vendor, show as option.	U 120V-277V  347 347V	GLR Fast Blow Fuse GMF Slow Blow Fuse EL Emergency Battery Pack (Not in 2') BC Branch Circuit Plug-on Wiring System. See options section for details. PAF Paint After Fabrication NYC NYC Compliant NYCU NYC Compliant, Union Label

**ACCESSORIES (ORDER SEPARATELY)**

- ITB4** Hanger for Close Mounting on a T-Bar Ceiling
- CSZT** Zip Tee Hanger - 1½" Spacer on T-Bar Ceiling
- CSSTH** Slide Tong Hanger with ⅞" Hole
- CSWG4** 4' Wire Guard, 2 Required for 8' Fixture
- CSWG3** 3' Wire Guard, 2 Required for 6' Fixture
- CSRA4** 4' Asymmetric Reflector
- CSR4** 4' Symmetric Reflector

For complete list of options and accessories, see options and accessories section.



### PHOTOMETRIC DATA

#### LUMINAIRE DATA

Luminaire	CS4-332-EB8 CS Striplight 4 <sup>7</sup> / <sub>16</sub> x 48 3-Lamp Striplight with PPT Cover
Ballast	REL3P325C
Ballast Factor	0.87
Lamp	F32T8
Lumens per Lamp	2900
Watts	90
Shielding Angle	N/A
Spacing Criterion	0° = 1.28 90° = 1.46
Luminous Opening in Feet	Length: 4.00 Width: 0.35 Height: 0.00

#### ZONAL LUMEN SUMMARY

Zone	Lumens	Lamp	Fixt.
0-30	1422	16.3	18.5
0-40	2395	27.5	31.2
0-60	4515	51.9	58.8
0-90	6587	75.7	85.8
90-120	847	9.7	11.0
90-130	984	11.3	12.8
90-150	1083	12.5	14.1
90-180	1092	12.6	14.2
0-180	7679	88.3	100.0

Test 13431 Test Date 5/20/2003

#### ENERGY DATA

Total Luminaire Efficiency	88.3%
Luminaire Efficacy Rating (LER)	74
IESNA RP-1-1993 Compliance	Noncompliant
Comparative Yearly Lighting Energy Cost per 1000 Lumens	\$3.24 based on 3000 hrs. and \$0.08 per KWH

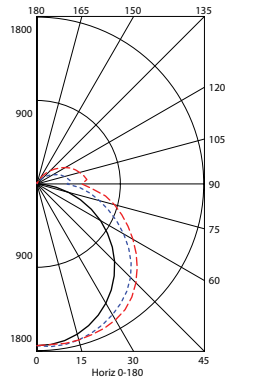
#### AVG. LUMINANCE (Candela/Sq. M.)

	0.0	22.5	45.0	67.5	90.0
0	13416	13416	13416	13416	13416
30	13201	13779	14462	14879	15039
40	13007	13901	15155	15778	15988
45	12885	14016	15527	16158	16408
50	12691	14174	15861	16602	16889
55	12453	14383	16193	17131	17506
60	12179	14639	16607	17914	18391
65	11771	14918	17283	19084	19721
70	11217	15196	18456	20996	21895
75	10486	15774	20765	24478	25696
80	9387	17534	25902	31393	33252
85	7675	24966	41022	50109	52755

#### COEFFICIENTS OF UTILIZATION (%)

RCR	RC	80			70			50			0	
		RW	70	30	10	70	50	30	10	50	30	10
1	91	86	81	77	87	83	79	75	77	73	70	59
2	82	74	67	61	78	71	65	60	66	61	56	47
3	74	64	56	50	71	62	54	49	57	51	46	39
4	68	56	48	42	64	54	47	41	50	44	39	33
5	62	50	41	35	59	48	40	35	45	38	33	28
6	57	45	36	30	54	43	35	30	40	34	29	24
7	53	40	32	27	50	39	31	26	36	30	25	21
8	49	37	29	24	47	35	28	23	33	27	22	19
9	46	33	26	21	44	32	25	21	30	24	20	17
10	43	31	24	19	41	30	23	19	28	22	18	15

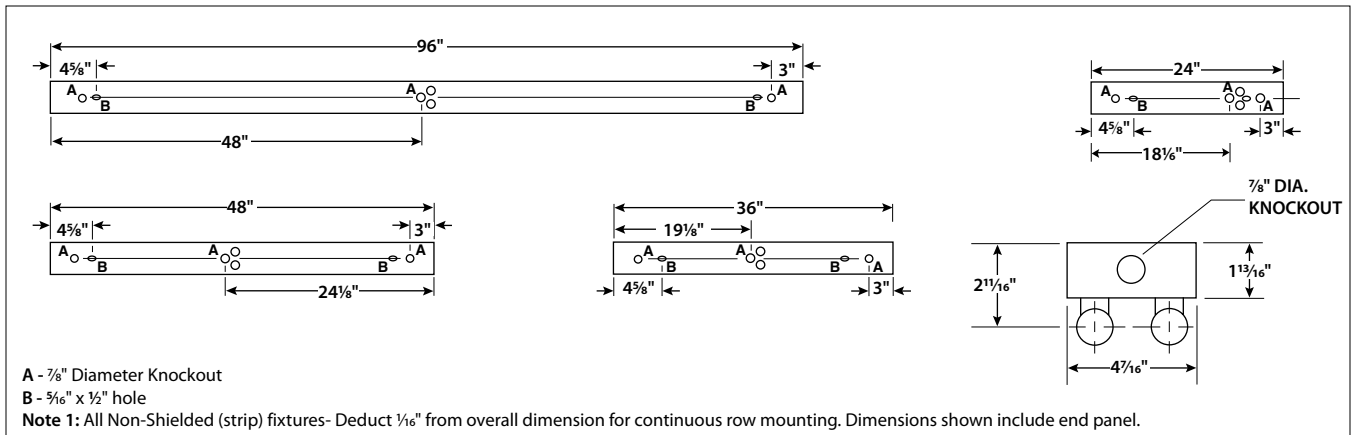
#### INDOOR CANDELA PLOT



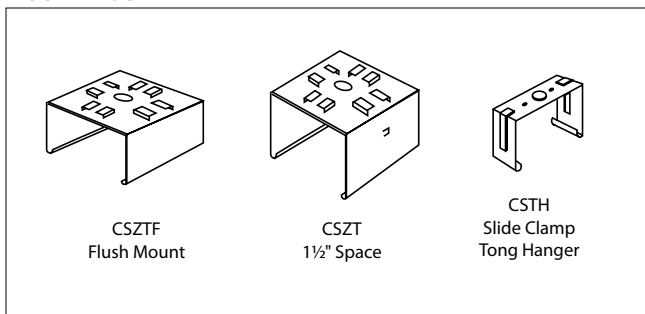
RCR = Room Cavity Ratio

RC = Effective Ceiling Cavity Reflectance RW = Wall Reflectance

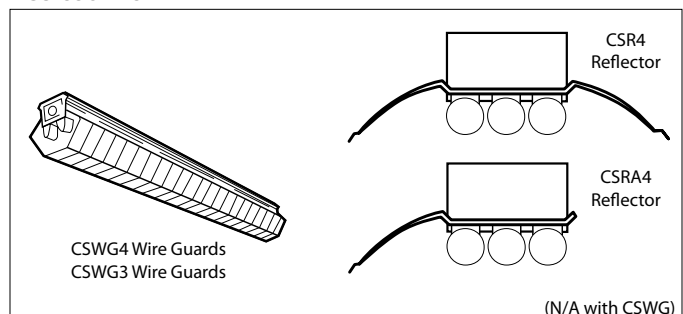
#### DIMENSIONAL DATA



#### MOUNTING DATA



#### ACCESSORIES



**NOTE:** All dimensions are in inches; dimensions and specifications are subject to change without notice. Please consult factory or check sample for verification.