

FEATURES

- Available 18"
- Heavy die formed steel channel
- Snap-on cover. No tools required. No hardware to lose
- Rotary lock lampholders for positive lamp contact
- Pre-heat fixtures have starters
- Channel ends double as joiners
- Individual or row mounting. Surface or suspended

PROJECT INFORMATION

Project Name _____

Type _____

Catalog No. _____

Date _____

CONSTRUCTION

Heavy gauge cold rolled steel housings fully assembled. Channel cover provides room-side access to ballast.

CERTIFICATION

All luminaires are built to UL 1598 standards and bear appropriate UL and cUL or CSA labels. Damp location labeling is standard. Emergency-equipped fixtures labeled UL 924.

FINISH

White painted parts are treated with a five stage phosphate bonding process and finished with a high reflectance baked enamel.

ELECTRICAL

Standard class "P", thermally protected, auto-resetting HPF ballast, sound rated A. All ballast leads extend a minimum of 6" through access location. NEC/CEC-compliant ballast disconnect is standard.

ORDERING INFORMATION

EXAMPLE CH2-115-120-GLR

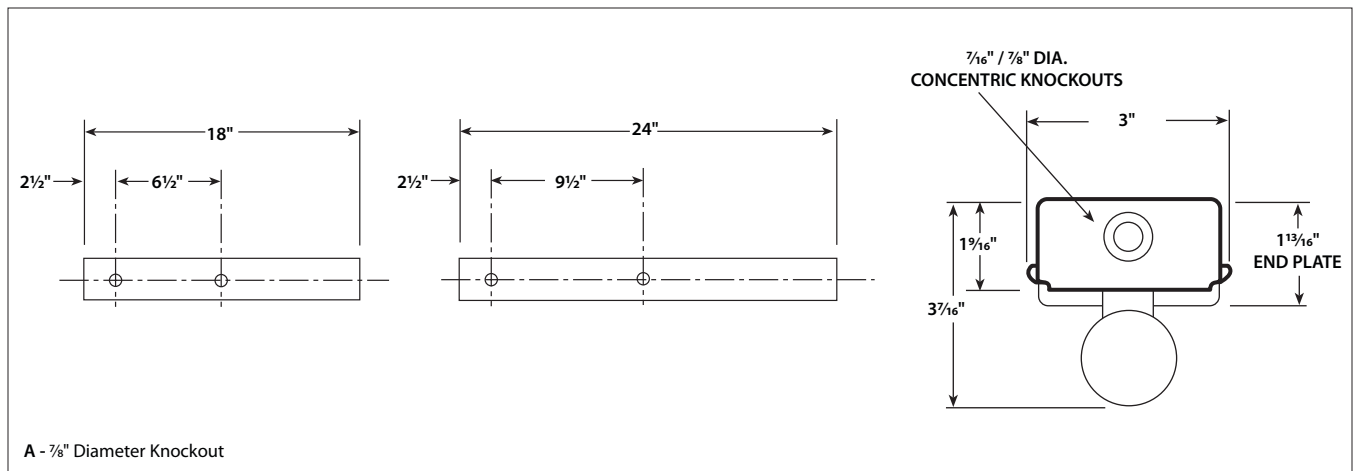
CH	1.5	-	1	15	-	120	-		
MODEL	SIZE		NO. OF LAMPS	LAMP TYPE		BALLAST		VOLTAGE	OPTIONS
CH Heavy Duty Narrow Channel	1.5 18" (1.5')		1 One	15 18", T12: 15 Watt		Blank High Power Factor For a specific ballast vendor, show as option.		120 120V	GLR Fast Blow Fuse GMF Slow Blow Fuse PAF Paint After Fabrication

ACCESSORIES (ORDER SEPARATELY)	
ITB4	Hanger for close mounting on a T-Bar ceiling
CHRA2	2' Asymmetric Reflector
CHR2	2', Symmetric Reflector
CS2	Maintains 1½" space when mounted to outlet box
CHWG2	2' Wire Guard

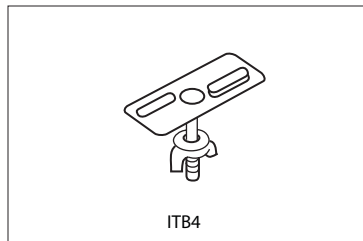
For complete list of options and accessories, see options and accessories section.

PHOTOMETRIC DATA – CONTACT FACTORY

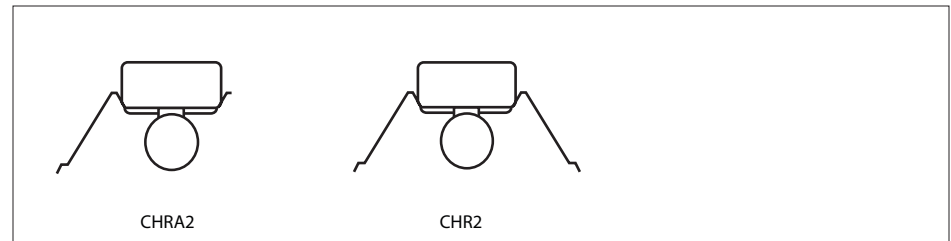
DIMENSIONAL DATA



MOUNTING DATA



ACCESSORY REFLECTORS



NOTE: All dimensions are in inches; dimensions and specifications are subject to change without notice. Please consult factory or check sample for verification.