

FEATURES

- 4¼" deep troffer
- Mitered corners on door present a clean uninterrupted appearance
- Rolled edge housing on all four sides makes the fixture safer and easier to handle
- T-slot steel hinges insure a snug door fit and positive retention when opening
- Heavy duty door frame enhances appearance from eye level
- Snug fitting door eliminates light leaks
- Integral T-Bar clips quickly secure fixture to grid system without the need for time consuming loose parts
- Snap-on ballast covers can be removed with lamps installed
- Corner hinging for easy insertion and removal of door frame from either side
- Housing ends secured by unique corner interlock and screws

PROJECT INFORMATION

Project Name _____

Type _____

Catalog No. _____

Date _____

HOUSING

Fixture is constructed of die formed and embossed code gauge steel. Designed for installation in all ceilings as shown below. Specify exact ceiling type.

BALLAST & ELECTRICAL

All luminaires are completely wired with class "P," thermally protected, resetting, HPF, LE ballast, sound rated A. Lampholders are bi-pin with positive retention. Furnished with an access plate.

FINISH

All metal parts processed with a multi-stage phosphate bonding treatment are finished in high reflectance gloss white polyester. For a post painted housing finish suffix catalog number with PAF.

SHIELDING

Standard lens is a 100% clear prismatic acrylic pattern 12. For other available lenses consult lens option sheet or contact your Columbia representative. Standard flush door is formed steel with mitered corners. Regressed or flush aluminum doors with mitered corners are also available.

CERTIFICATION

All luminaires are built to UL 1598 standards and bear appropriate UL and cUL or CSA labels. Damp location labeling is standard. Emergency-equipped fixtures labeled UL 924.

ORDERING INFORMATION

EXAMPLE 4PS14-232G-FSA12.125M-EU

4PS		14		-		-		-		-	
MODEL	NO. OF LAMPS	CEILING TYPE	SHIELDING	VOLTAGE	OPTIONS	SIZE	LAMP TYPE	DOOR STYLE	BALLAST		
4PS Specification Grade Static Troffer	1 One 2 Two 3 Three	G Inverted T-bar F Overlap Flange M Modular	A12 Pattern 12 Acrylic Lens A15 Pattern 15 Acrylic Lens A19 Pattern 19 Acrylic Lens, 0.156" Nominal PC1 ½" x ½" x ½" Specular Silver Polystyrene Louver PC2 1½" x 1½" x 1" Specular Silver Polystyrene Louver For thicker lens, specify - Example: A12.125	U 120V-277V 347 347V	F0735 35K 75 CRI T8 Lamps Installed F0835 35K 82CRI T8 Lamps Installed F5835 35K 85CRI T5 Lamps Installed GLR Fast Blow Fuse EL Emergency Battery Pack PAF Paint After Fabrication SLL Spring Loaded Latches MS9 Master/Satellite Pair w/9' Harness NYC NYC Compliant NYCU NYC Compliant, Union Label	14 1' x 4'	28 4', T5: 28 Watt 32 4', T8: 32, 30, 28 or 25 Watt 54 4', T5HO: 54 or 51 Watt	FS White Flush Steel FA White Flush Aluminum RA White Regressed Aluminum SFA Silver Flush Aluminum SRA Silver Regressed Aluminum	E Electronic T8, Instant Start EP Electronic T5 or T8, Programmed Start For a specific ballast vendor show as option.		

PHOTOMETRIC DATA

Test 13767 Test Date 12/27/04

LUMINAIRE DATA

Luminaire	4PS14-232G-FSA12-E-PAF 4PS Lensed Troffer 1' x 4' 2-Lamp with A12 Pattern Acrylic Prisms Lens
Ballast	SSB2-120-2/32IS
Ballast Factor	0.88
Lamp	FO32/741
Lumens per Lamp	2850
Watts	56
Shielding Angle	N/A
Spacing Criterion	0° = 1.24 90° = 1.22
Luminous Opening in Feet	Length: 3.82 Width: 0.82 Height: 0.00

ZONAL LUMEN SUMMARY

Zone	Lumens	% Lamp	% Fixt.
0-30	1497	25.8	34.5
0-40	2368	40.8	54.5
0-60	3715	64.0	85.5
0-90	4346	74.9	100.0
0-180	4346	74.9	100.0

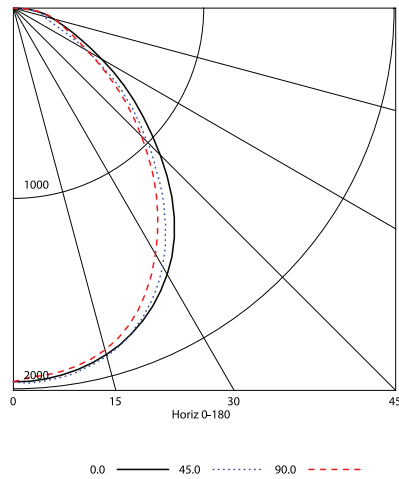
ENERGY DATA

Total Luminaire Efficiency	74.9%
Luminaire Efficacy Rating (LER)	65
ANSI/IESNA RP-1-2004 Compliance	Noncompliant
Comparative Yearly Lighting Energy Cost per 1000 Lumens	\$3.69 based on 3000 hrs. and \$0.08 per KWH

COEFFICIENTS OF UTILIZATION (%)

RCR	RC	80				70				50				0					
		RW	70	50	30	10	70	50	30	10	50	30	10	0	70	50	30	10	0
1	82	79	76	73	80	77	75	72	74	72	70	64							
2	76	70	65	61	74	69	64	61	66	62	59	55							
3	70	62	57	52	68	61	56	52	59	55	51	48							
4	64	56	50	45	63	55	49	45	53	48	44	42							
5	59	50	44	40	58	50	44	39	48	43	39	37							
6	55	46	40	35	54	45	39	35	44	39	35	33							
7	51	42	36	31	50	41	35	31	40	35	31	29							
8	48	38	32	28	47	38	32	28	37	32	28	26							
9	45	35	30	26	44	35	29	26	34	29	25	24							
10	42	33	27	23	41	32	27	23	32	27	23	22							

INDOOR CANDELA PLOT



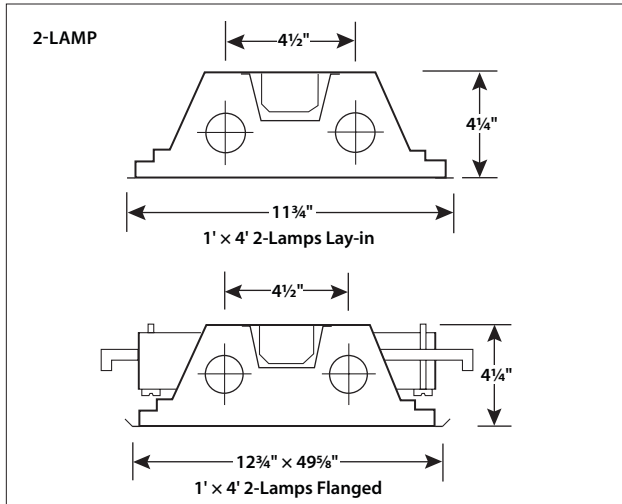
AVG. LUMINANCE (Candela/Sq. M.)

	0.0	22.5	45.0	67.5	90.0
0	6843	6843	6843	6843	6843
30	6504	6472	6311	6094	6009
40	5896	5782	5446	5222	5191
45	5381	5263	4918	4716	4696
50	4840	4667	4417	4194	4189
55	4324	3977	3813	3588	3618
60	3732	3300	3083	3027	3139
65	3243	2814	2459	2732	2864
70	2968	2580	2101	2682	2794
75	2924	2601	2224	2763	3032
80	3194	2732	2651	3033	3374
85	3402	3082	2801	3562	3642

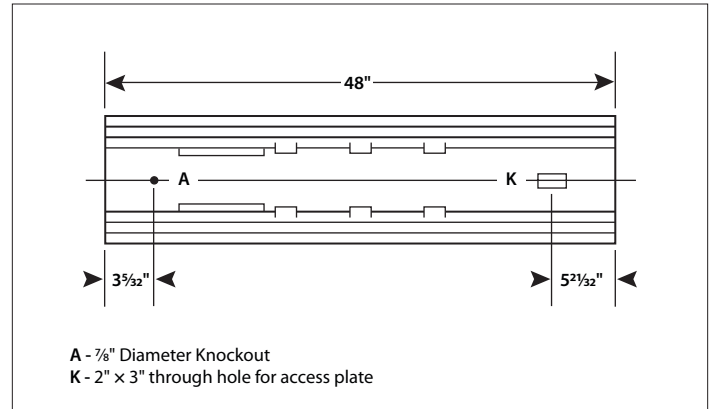
RCR = Room Cavity Ratio

RC = Effective Ceiling Cavity Reflectance RW = Wall Reflectance

DIMENSIONAL DATA



Flanged cut out dimensions for single unit only: 12" x 48 7/8"



NOTE: All dimensions are in inches; dimensions and specifications are subject to change without notice. Please consult factory or check sample for verification.