

FEATURES

- Ideal for garages, warehouses, parking areas or food processing plants
- Heavy 20 gauge steel construction ensures a rigid non-warping fixture for years to come
- Lens is completely enclosed in sturdy extruded aluminum frame
- Thick PVC gasket is completely recessed into the fixture body protecting the lamp chamber from dust, insects and moisture
- Positive aluminum latch completely covers aluminum frame, ensuring complete lamp protection from the outside environment
- Heavy male prisms on inside of lens obscure lamp image and facilitates lens cleaning
- Wireway channel is completely wired from the factory
- ¼ turn captive fasteners hold reflector securely

PROJECT INFORMATION

Project Name _____

Type _____

Catalog No. _____

Date _____

HOUSING

Housing is constructed of die-formed 20 gauge steel. Available in 4' or 8' lengths. Extruded aluminum shielding frame is completely gasketed and secured with positive action latches and full length hinge. Tamper resistant latches are optional. Gasket seal is recessed into fixture body and protected by metal from weather. All knockouts are reset prior to painting. Easy access to the ballast without using tools. The reflector is secured with ¼ turn captive fasteners. Fixture should only be ceiling mounted to a flat surface as the top of the housing is not water tight.

BALLASTS

Energy efficient, thermally protected, automatic resetting, Class P, high power factor, sound rated A, unless otherwise specified. CEE NEMA Premium compliant.

ELECTRICAL

Standard class "P", thermally protected, auto-resetting HPF ballast, sound rated A. CEE NEMA Premium compliant. All ballast leads extend a minimum of 6" through access location. NEC/CEC-compliant ballast disconnect is standard.

CERTIFICATION

All luminaires are built to UL 1598 standards and bear appropriate UL and cUL or CSA labels. Damp location labeling is standard. Emergency-equipped fixtures labeled UL 924.

FINISH

All metal parts are processed with a multi-stage phosphate bonding treatment and finished with a high reflectance outdoor baked white enamel.

SHIELDING

Standard lens is a vacuum formed one-piece extruded prismatic high impact (DR) lens-shield locked firmly in extruded aluminum frame. Male conical prisms are located on the inside to obscure any lamp image and facilitate cleaning.

ORDERING INFORMATION

EXAMPLE 47S4-232-EU

47S

MODEL	NO. OF LAMPS IN CROSS SECTION	BALLAST	VOLTAGE	LENS	OPTIONS
47S Steel All Weather Industrial	1 One 2 Two	LE Energy Saving Magnetic T12 (96HO only) EP Electronic T12, Rapid Start E Electronic T8, Instant Start 4E 4-Lamp Electronic T8, Instant Start	U 120V-277V 347 347V	DR12 Pat #12 High Impact (Standard) CPP Clear Prismatic Polycarbonate OP Frost Glaze Acrylic Lens UV UV Blocking Acrylic Lens	GLR Fast Blow Fuse EL Emergency Battery Pack (N/A Wet Label units) TP Tamper Resistant Latches NYC NYC Compliant NYCU NYC Compliant, Union Label
	SIZE	LAMP TYPE			
	4 4' 8 8'	32 4', T8: 32 Watt 48HO 4', T12: 60 Watt 48T8HO 4', T8: 44 Watt 96T8 8', T8: 59 Watt 96HO 8', T12: 110 or 95 Watt 96T8HO 8', T8: 86 Watt High Output units should not be surface mounted.			

PHOTOMETRIC DATA

Test 8600 Test Date 1/8/03

LUMINAIRE DATA

Luminaire	4754-232-E Enclosed 2-Lamp All Weather with Pattern A12 Wraparound Lens
Ballast	B232I120
Ballast Factor	0.88
Lamp	FO32/31K
Lumens per Lamp	2900
Watts	59
Shielding Angle	N/A
Spacing Criterion	0° = 1.12 90° = 1.25
Luminous Opening in Feet	Length: 4.08 Width: 0.42 Height: 0.00

ZONAL LUMEN SUMMARY

Zone	Lumens	Lamp	Fixt.
0-30	868	15.0	19.5
0-40	1408	24.3	31.6
0-60	2595	44.7	58.2
0-90	3994	68.9	89.6
90-120	415	7.2	9.3
90-130	447	7.7	10.0
90-150	463	8.0	10.4
90-180	463	8.0	10.4
0-180	4457	76.8	100.0

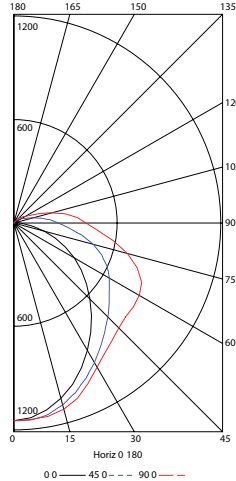
ENERGY DATA

Total Luminaire Efficiency	76.8%
Luminaire Efficacy Rating (LER)	66
IESNA RP-1-1993 Compliance	Noncompliant
Comparative Yearly Lighting Energy Cost per 1000 Lumens	\$3.64 based on 3000 hrs. and \$0.08 per KWH

COEFFICIENTS OF UTILIZATION (%)

RCR	RW	80			70			50			0		
		70	50	30	10	70	50	30	10	50	30	10	0
1	79	75	70	67	76	72	68	65	67	64	61	52	
2	71	64	57	52	68	61	56	51	57	53	49	42	
3	64	55	48	42	62	53	47	41	50	44	40	34	
4	59	48	41	35	56	47	40	35	44	38	33	29	
5	54	43	35	30	51	42	35	29	39	33	28	24	
6	49	38	31	26	47	37	30	25	35	29	25	21	
7	46	35	28	23	44	34	27	22	32	26	22	18	
8	43	32	25	20	41	31	24	20	29	23	19	16	
9	40	29	22	18	38	28	22	18	27	21	17	15	
10	37	27	20	16	36	26	20	16	25	19	16	13	

INDOOR CANDELA PLOT



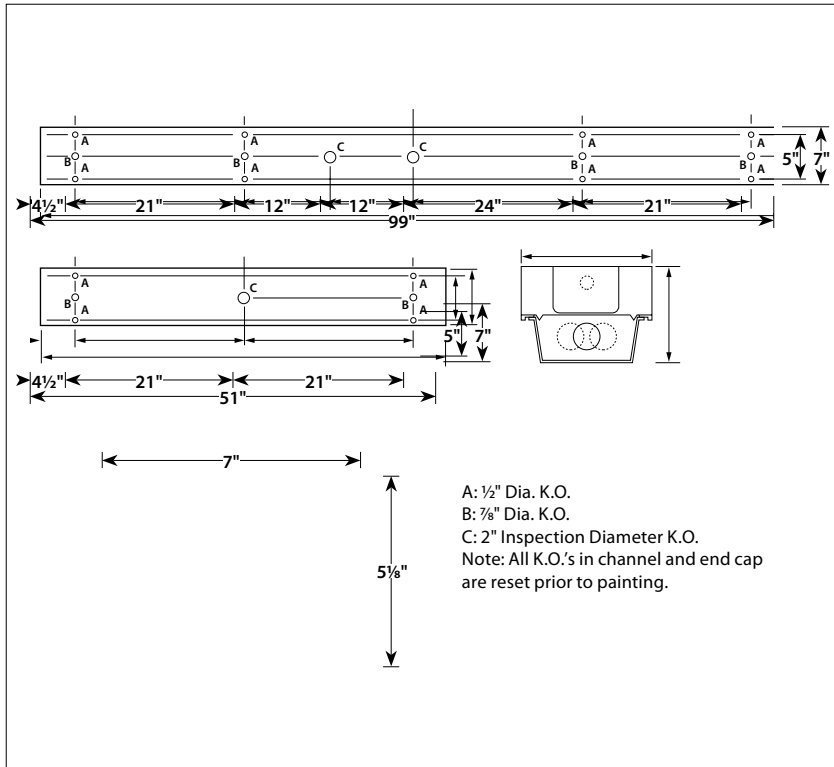
AVG. LUMINANCE (Candela/Sq. M.)

Average Luminance Angle	0.0	22.5	45.0	67.5	90.0
0	7167	7167	7167	7167	7167
30	6158	6361	6753	6949	6970
40	5715	6101	6699	7093	7240
45	5517	6058	6814	7391	7604
50	5345	6069	7016	7857	8228
55	5202	6144	7359	8663	9232
60	5075	6294	7990	9724	10503
65	4875	6555	8829	11103	12114
70	4683	6997	9918	12709	13921
75	4417	7669	11528	14926	16455
80	4160	9007	14361	18955	21053
85	4397	13118	22920	31497	35100

RCR = Room Cavity Ratio

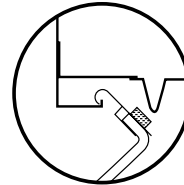
RC = Effective Ceiling Cavity Reflectance RW = Wall Reflectance

DIMENSIONAL DATA



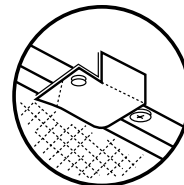
CONSTRUCTION DETAIL

Extruded Door Frame and Seal



Edge of one-piece formed prismatic lens is completely secured in extruded aluminum frame with non-separating mitered corners. Full length hinge is integral part of extrusion; hinges open for service or may be easily removed without tools. Closed cell PVC seal is regressed into fixture body thereby protected from moisture and weather.

Anti-Tamper Latches



May be specified as an option for use in areas where security or vandalism is a problem. Shoulder head steel screw is provided and remains captive with latch in open position. Must be specified when fixture is ordered.

NOTE: All dimensions are in inches; dimensions and specifications are subject to change without notice. Please consult factory or check sample for verification.