

RKS/RKSR

Retrofit Kit Strip and Industrial Reflector

FEATURES

- Retrofit package to upgrade existing 4' or 8' striplights to energy-efficient fixtures using the latest T8 or T5HO technology
- Kit maximizes fixture efficiency and provides uniform light distribution
- Kits are shipped completely pre-wired and install with simple hand tools
- Standard kits include: channel cover or reflector, pre-wired ballast and sockets, safety cables, and optional bulk lamps
- Designed to fit most existing channel widths from 4" to 5 3/8"
- Kit attaches to existing socket brackets to reduce waste
- Includes dual safety cables for one person installation and secure attachment to existing channel
- Energy savings up to 35% compared to 2-lamp T12HO magnetic systems, while maintaining existing light levels.



FIXTURE RENOVATION

ORDERING INFORMATION

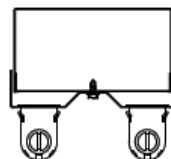
MODEL	NO. OF LAMPS IN CROSS SECTION	REFLECTOR TYPE (RKS ONLY)	VOLTAGE	OPTIONS			
RKS Retrofit Kit Strip Type Fixtures	1 One 2 Two	GW Gloss White, 91% Reflective	U 120V- 277V	(Required when no ballast is supplied.)			
RKSR Retrofit Kit Industrial Reflector Type	See Product Availability table below.	M4R Enhanced Specular Aluminum, 95% Reflective		IS8 Instant Start T8 Sockets			
				PS8 Programmed Start T8 Sockets			
				PS5 Programmed Start T5 Sockets			
	SIZE	LAMP TYPE	BALLAST				
	4 4'	32 4', T8: 32, 30, 28 or 25 Watt	NOTE: See Technical Section for other ballast options.				
	8 8'	54 4', T5HO: 54 or 51 Watt	ELW 1 or 2-Lamp, Electronic T8, Instant Start, 0.77 Ballast Factor				
			E 1 or 2-Lamp, Electronic T8, Instant Start, 0.88 Ballast Factor				
			EHL 1 or 2-Lamp, Electronic T8, Instant Start, 1.18 Ballast Factor				
			ESD 1 or 2-Lamp, Electronic T8, Step Dimming, Programmed Start, 0.88 Ballast Factor				
			EP 1 or 2-Lamp, Electronic T8, Programmed Start, 0.88 Ballast Factor or Electronic T5HO, 1.0 Ballast Factor				
			4ELW 4-Lamp, Electronic T8, Instant Start, 0.77 Ballast Factor				
			4E 4-Lamp, Electronic T8, Instant Start, 0.88 Ballast Factor				
			4EHL 4-Lamp, Electronic T8, Instant Start, 1.18 Ballast Factor				
			4EP 4-Lamp, Electronic T8, Programmed Start, 0.88 Ballast Factor or Electronic T5HO, 1.0 Ballast Factor				
			Blank No Ballast Supplied (Please specify socket type under options)				

ACCESSORIES (ORDER SEPARATELY)

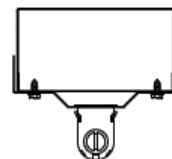
- RKF32T8830** T8 32 Watt Lamps, F0830, 85CRI, 3000K, order in case quantity only (25)
- RKF32T8835** T8 32 Watt Lamps, F0835, 85CRI, 3500K, order in case quantity only (25)
- RKF32T8841** T8 32 Watt Lamps, F0841, 85CRI, 4100K, order in case quantity only (25)
- RKF54T5835** T5HO 54 Watt Lamps, F5835, 85CRI, 3500K, order in case quantity only (40)
- RKF54T5841** T5HO 54 Watt Lamps, F5841, 85CRI, 4100K, order in case quantity only (40)

PRODUCT AVAILABILITY

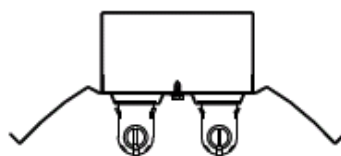
SIZE	NO. OF LAMPS IN CROSS SECTION	NO. OF LAMPS IN FIXTURE	LAMP TYPE
4'	1	1	32, 54
	2	2	32, 54
8'	1	2	32, 54
	2	4	32, 54



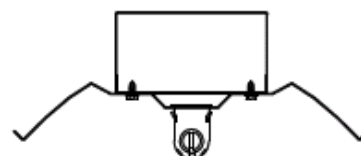
RKS
2-Lamp



RKS
1-Lamp



RKSR
2-Lamp



RKSR
1-Lamp

Columbia
LIGHTING