

JT8

Dedicated T8 Lensed Troffer

LENSED TROFFERS

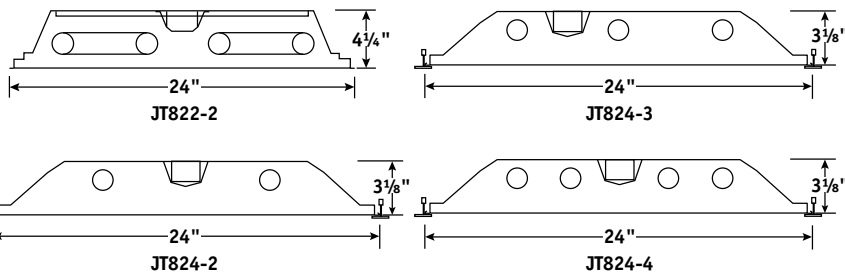


FEATURES

- Optimized for T8 lamps
- Flush steel door (standard) hinges from either side for maximum flexibility
- Mitered corners standard
- Hemmed edges on 2' x 4' for contractor-friendly handling
- Mechanical light trap prevents light leak without foam gasketing
- Integral T-Bar clips (2' x 4' only)
- Housing reinforced with embossments
- Painted parts are treated with a five stage phosphate bonding process and finished with a backed white enamel
- UL listed 1598, cUL or CSA. Damp Location standard

ORDERING INFORMATION

JT8	-			G	-			-	
MODEL	NO. OF LAMPS		CEILING TYPE		SHIELDING		VOLTAGE		
JT8 Dedicated T8 Lensed Troffer	2 Two	3 Three	G Inverted T-Bar		A12 Pattern 12 Acrylic Lens (Std.)	A19 Pattern 19 Acrylic Lens, 0.156" Nominal	PC1 ½" x ½" x ½" Specular Silver Polystyrene Louver	U 120V-277V 347 347V	
	See Product Availability table below.				For more shielding options see page 41.				
SIZE	LAMP TYPE		DOOR		BALLAST		OPTIONS		
22 2' x 2'	17 2', T8: 17 Watt (2, 3, or 4 lamps)		FS White Flush Steel		NOTE: See Technical Section for other ballast options.		F0735 35K 75CRI T8 Lamps Installed		
24 2' x 4'	31U1 U-Bent, 1⅝" Leg Spacing T8: 31 Watt (2 or 3 lamps)		FA White Flush Aluminum		E Electronic T8, Instant Start		F0835 35K 82CRI T8 Lamps Installed		
	32 4', T8: 32, 30, 28 or 25 Watt		For more door options contact factory.		3E 3-Lamp Electronic T8, Instant Start		EL Emergency Battery Pack		
	32U6 U-Bent, 6" Leg Spacing T8: 32 Watt (2 lamps)				4E 4-Lamp Electronic T8, Instant Start (17W lamps only)		GLR Fast Blow Fuse		
	40TT Twin Tube Compact, 2G11 Base: 40 Watt (2 or 3 lamps)				24E (1) 2-Lamp & (1) 4-Lamp Electronic T8, Instant Start (For use with MS9)		MS9 Master/Satellite w/9' Harness		
					EPTT Electronic Twin Tube, Programmed Start		PAF Paint After Fabrication		
							SRA Specular Reflector		
							For more options see pages 99-114.		



PRODUCT AVAILABILITY

SIZE	NO. OF LAMPS	LAMP TYPE	GRID TRIM HEIGHT
2' x 2'	2	17, 31U1, 32U6, 40TT	4 ¾"
	3	17, 31U1, 40TT	4 ¾"
	4	17	4 ¾"
2' x 4'	2	32	4 ⅜"
	3	32	4 ⅜"
	4	32	4 ⅜"