

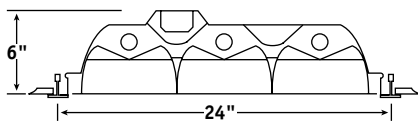


FEATURES

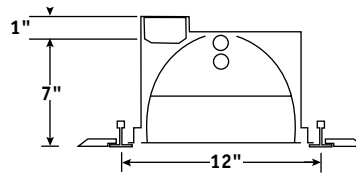
- Meets IES standard RP-1 glare control recommendations
- Ideal for today's computer intensive offices
- Wide light distribution provides uniform illumination
- Unique optical system eliminates glare
- Treated with a five-stage phosphate bonding process and finished with a baked white enamel
- Low iridescent anodized aluminum louver and reflector
- Surface and pendant mount available
- Mechanical light trap prevents light leaks
- Black reveal with full air handling capabilities
- UL listed 1598, cUL or CSA. Damp Location standard

ORDERING INFORMATION

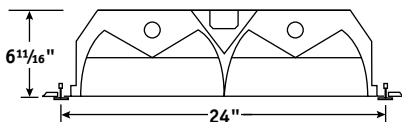
HC									
MODEL	NO. OF LAMPS	CEILING TYPE		CELLS WIDE BY CELLS LONG	AIR CONTROL	VOLTAGE			
HC Low Glare Parabolic	1 One 2 Two 3 Three See Product Availability table below.	G Grid F Overlap Flange M Modular Fit-in Trim SG Slot Grid SM Surface Mount*	See Product Availability table below.	Blank None V Supply Vanes D Extract Dampers VD Vanes & Dampers	U 120V-277V 347 347V				
SIZE	LAMP TYPE	LOUVER FINISH		AIR FUNCTION	BALLAST		OPTIONS		
14 1' x 4'	28 4', T5: 28 Watt	LD Low Iridescent Semi-Specular (Std.) LS Low Iridescent Specular See Product Availability table below.	S Static A Air Handling C Combination Supply/Extract H Heat Extract	NOTE: See Technical Section for other ballast options. E Electronic T8, Instant Start 3E 3-Lamp Electronic T8, Instant Start 4E 4-Lamp Electronic T8, Instant Start 24E (1) 2-Lamp and (1) 4-Lamp Electronic T8, Instant Start EP Electronic T5 or T8, Programmed Start 3EP 3-Lamp Electronic T5HO or T8, Programmed Start 4EP 4-Lamp Electronic T5HO (N/A 347V) or T8, Programmed Start ETT Electronic Twin Tube, Instant Start (Specify voltage)	For information about air handling and controls, see page 103.		F0735 35K 75CRI T8 Lamps Installed F0835 35K 82CRI T8 Lamps Installed F5835 35K 85CRI T5 Lamps Installed C388 3-Wire Flex C488 4-Wire Flex EL Emergency Battery Pack GLR Fast Blow Fuse GMF Slow Blow Fuse MS9 Master/Satellite w/9' Harness PAF Paint After Fabrication NYC NYC Compliant NYCU NYC Compliant, Union Label		
22 2' x 2'	31U1 U-Bent, 1 1/2" Leg Spacing T8: 31 Watt 32 4', T8: 32, 30, 28 or 25 Watt 32U6 U-Bent, 6" Leg Spacing T8: 32 Watt 40TT Twin Tube Compact, 2G11 Base: 40 Watt 54 4', T5HO: 54 or 51 Watt						For other options see pages 96-112.		
24 2' x 4'									



HC24-3 27 Cell



HC14-2 12 Cell



HC24-2 18 Cell

PRODUCT AVAILABILITY

SIZE	NO. OF LAMPS	LAMP TYPE	LOUVER CONFIGURATIONS	LOUVER FINISH
1' x 4'	1	28, 32, 54	1 x 12 (12)	LD, LS
	2	28, 32, 54	1 x 12 (12)	LD, LS
2' x 2'	2	31U1, 40TT	2 x 4 (8)	LD, LS
	2*	40TT	3 x 4 (12)	LD, LS
	2*	32U6	3 x 4 (12)	LD, LS
	3	31U1, 40TT	3 x 4 (12)	LD, LS
2' x 4'	2	28, 32, 54	2 x 9 (18)	LD, LS
	3	28, 32, 54	3 x 9 (27)	LD, LS

If desired lamp or louver configuration is not shown above, contact your local Columbia Lighting representative. PVHC meets RP-1 preferred standards. Various options may increase fixture height on 2' x 2' units. Contact your Columbia Lighting representative if plenum depth is a concern. Standard louver finish shown in bold.
*Not available in surface mount.