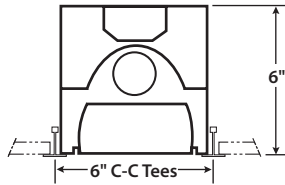
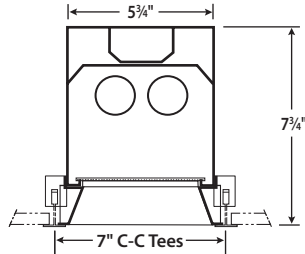


Type G Lay-in exposed grid. Fits standard 1" wide, 1½" tall tee.

Flush Trim

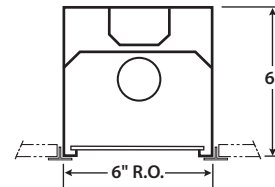


Regressed Trim



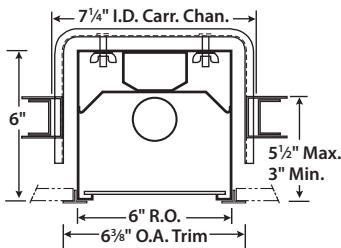
Type GT Integral cross-tee (grid ends lay into standard T-bar, sides act as integral cross-tee to support tile). Fits standard 1" wide, 1½" tall tee. Cut ceiling tile into two 8⅞" strips.

End View

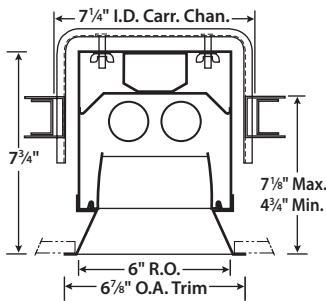


Type F For hard ceiling applications. Yoke hangers are shipped separately. Carrier channel by others.

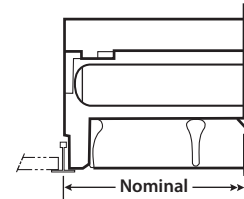
Flush Flange



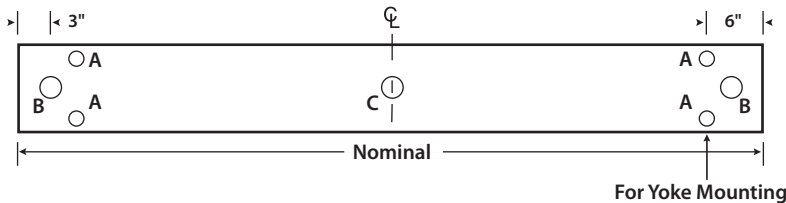
Regressed Flange



Side View

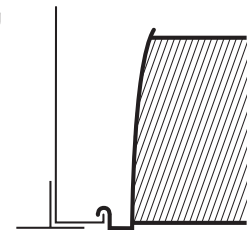


Single Mounting

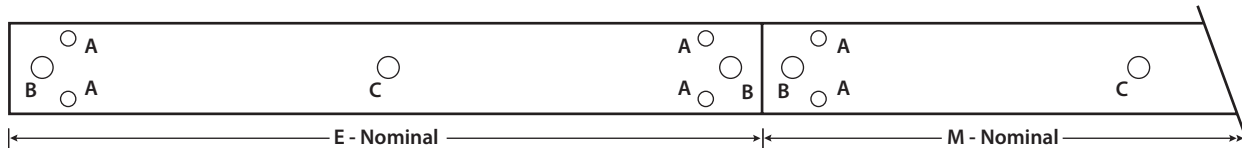


Louver Retention

Self aligning louver tips into place.



Row Mounting



Plaster Frame Opening:
6⅞" x Nom. + ¼"

Knockouts:
A - ½" Mounting K.O.
B - 7/8" Service K.O.
C - 2" Access K.O.